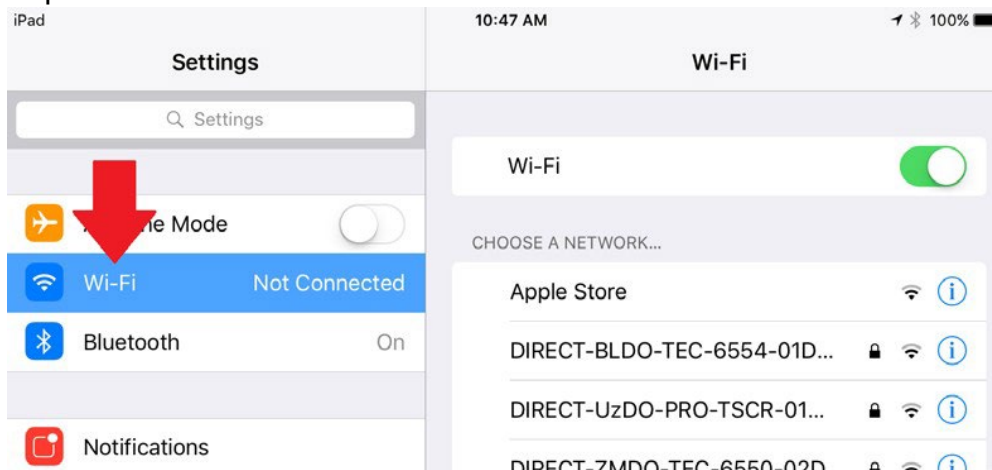


How to Connect your Apple iOS device to the Palmdale School District Wireless

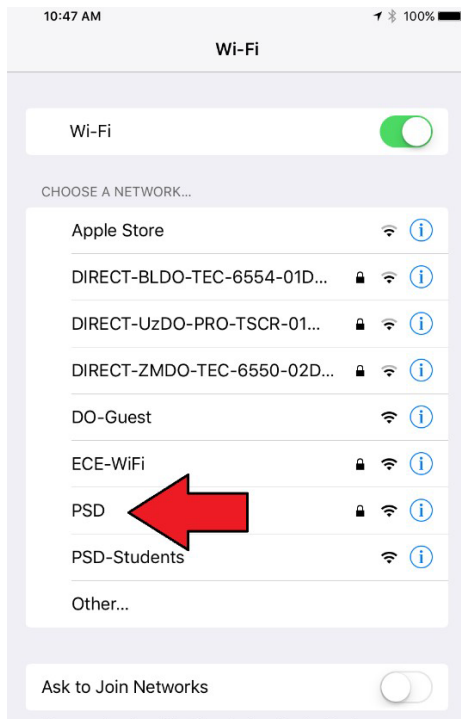
1. Tap on Settings



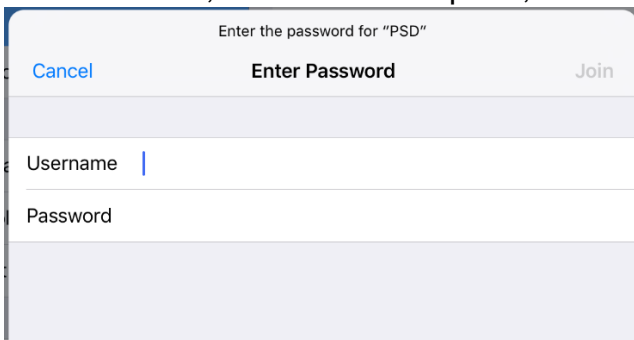
2. Tap on Wi-Fi



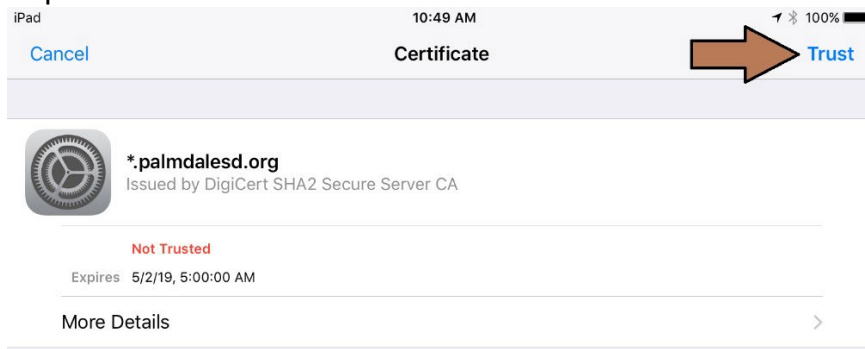
3. Select PSD



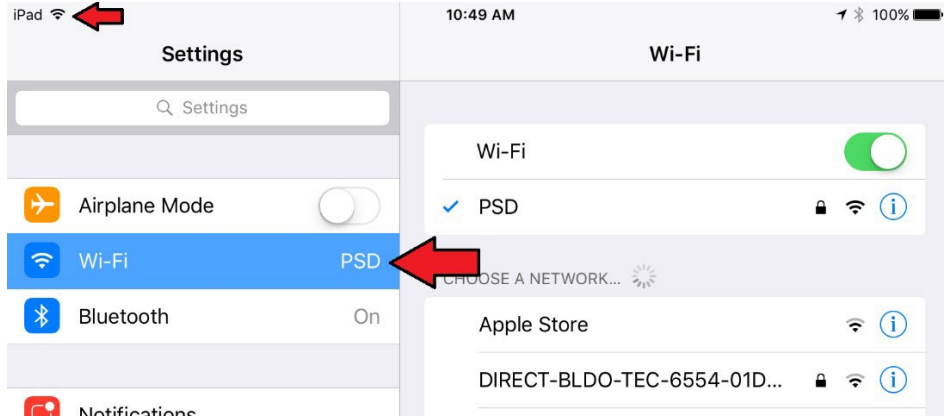
4. Enter your Active Directory username and password (the same login that you use for IC, a Windows computer, or the district website) and Tap Join



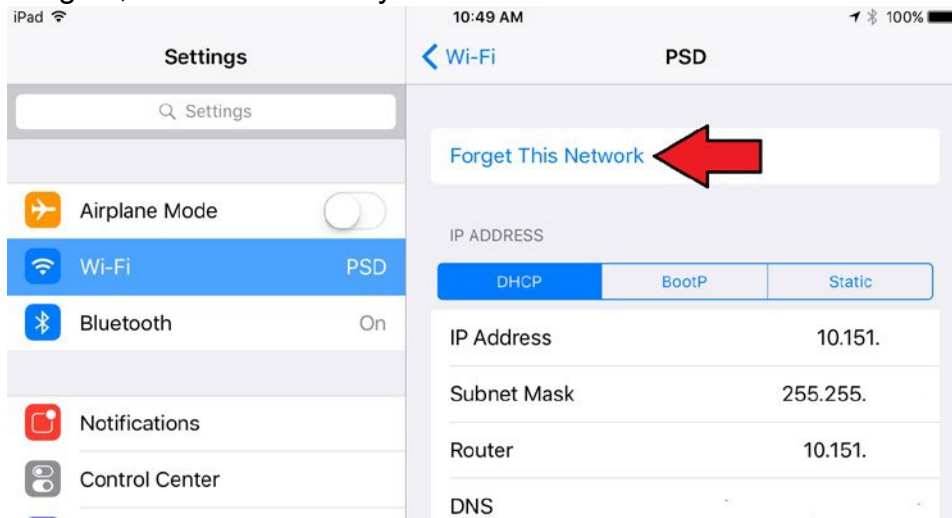
5. Tap Trust on the Certificate Screen



6. Once you have joined, you will have a radio signal in the upper left corner next to the word iPad, and PSD will show next to Wi-Fi in the left column. Typically, it will connect again each time it is in range of the district wireless, without you having to log in again, regardless of the school site. It also works at the District Office and in the SDA.



7. If you should have issues connecting to the wireless when you were connected before, and you know that you are in the range of the PSD wireless, then go into Setting > Wi-Fi and tap the blue "i" with a circle around it to the right of the PSD Wi-Fi in the right column and then tap Forget This Network. You will have to log in again, but it solves many connection issues.



8. If you keep getting prompted to join the PSD Guest network, or it keeps trying to connect to it, you can also use the above procedure to Forget This Network.